



North America's first real-time internet based GPS/AVL system with vehicle tracking and telematics.

AFI International Tracking Solutions is North America's first real-time internet based GPS/AVL system with a clear focus on vehicle tracking and telematics.

By adopting the AFI International Tracking Solutions® GPS/AVL solution, clients reduce security liabilities and exposure while at the same time increasing efficient use of resources. AFI provides you with the tools to easily monitor your entire fleet's activity.

Simple
Solutions
for Securing
your Fleets





Reduce Liability Exposure

- Increase Driver Accountability
- Optional Satellite Redundancy Hardware
- Optional Configurable Personal Trackers
- Monitor Live and Historical Activity
- Monitor Idling and Speeding
- Get Instant Notification of Exception Activities
- Second by Second On-Board Data Storage for Accident Reconstruction (SD Card)
- Eliminate Unauthorized Use of Vehicles

Sensor Connectivity & Reporting Tools

- Improve Safety & Security with Alarm Notifications (Panic Buttons)
- Radio Frequency Identification (RFID)
- Driver Identification (Key Fobs or Card Swipes)
- Engine Control Module Integration
- Panic Alert (Audio & Visual Screen Pop-Ups)
- Electronic Reports E-Mailed Automatically
- Both Management and Exceptions Reporting Available



SENSOR CONNECTIVITY

Vehicles:

Date From:
 Date To: (yyyy-mm-dd)

Exception Name	Alarm	Vehicle name	Date	Lat/Long	Status
Panic Event	Panic:On	TB Bus: 126	3/31/2009 7:18:59 AM	(48.417308807373, -89.236572265625)	0
Panic Event	Panic:On	TB Bus: 117	3/12/2009 6:12:48 AM	(48.385181427002, -89.2472610473633)	0
Panic Event	Panic:On	TB Bus: 219	3/10/2009 7:08:32 AM	(48.421459197998, -89.2621383666992)	0
Panic Event	Panic:On	TB Bus: 149	3/9/2009 2:32:38 PM	(48.3742980957031, 89.2686004638672)	1

VEHICLE ACTIVITY SUMMARY

Search for:
 Vehicle Name:
 Date/Time From: Report type:
 Date/Time To:

Start time	Travel Time	Distance (KSI)	Stops Report Color Legend
9/15/2008 10:44:45 AM	00:08:18	11.4	
9/15/2008 10:53:04 AM	00:13:02	00:13:02	[9-0] CRANSTON CRES, MIDLAND, ON
9/15/2008 11:06:06 AM	00:12:23	16.6	
9/15/2008 11:18:29 AM	00:38:30	00:00:00	[A-H] [0-0] PENETANGUSHENE RD, MIDLAND, ON
9/15/2008 11:56:59 AM	00:04:36	2.9	
9/15/2008 12:01:34 PM	00:05:22	00:00:41	[243-260] KING ST, MIDLAND, ON
9/15/2008 12:06:56 PM	00:05:10	1.6	
9/15/2008 12:12:06 PM	00:04:00	00:04:00	[505-543] KING ST, MIDLAND, ON
9/15/2008 12:19:05 PM	00:24:12	15.4	
9/15/2008 12:40:18 PM	00:15:09	00:00:00	[970-1024] FULLER AVE, PENETANGUSHENE, ON
9/15/2008 12:55:27 PM	00:07:36	7.7	

Map showing location of vehicle 3226 at Fuller Ave, Penetangushene, ON. Stop time: 9/15/2008 12:40:18 PM. Stop Duration: 00:15:09. Idle: 00:00:00. Location: [970-1024] FULLER AVE, PENETANGUSHENE, ON.

PANIC EVENT EXCEPTION REPORTS



ACTUAL CONTROL CENTRE

Additional Hardware Integration



PERSONAL TRACKERS

Personal Trackers

Personal Trackers use both a Cellular Network and GPS technology to provide real-time location information.

Staff is able to track these personal units through a custom web site and they can be configured to report personal location information at timed intervals as short as 10 seconds. In addition, there is a programmable SOS Panic Button and two additional call buttons that can be configured with two phone numbers.



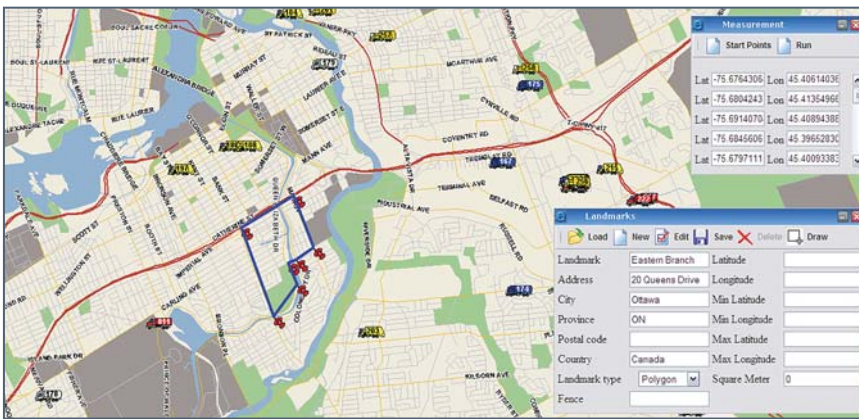
RFID Integrations

RFID Integrations

AFI Tracking Solution units can be integrated with RFID Hardware, allowing staff to continuously track the location of a number of identification tags. These tags can vary in size and shape, accommodating to any tracking requirements.

Through radio frequency, the RFID receiver monitors tags within a predetermined range. If a tag leaves the area in question, a notification can be sent to management via e-mail.

Geofencing Capabilities and Functionality



LANDMARKS TOOL

Landmarks Tool

AFI Tracking Solutions allows users to enter customer specific landmarks (a.k.a. geofences) into the system, such as bases, frequent stops, places of interest, customer sites, etc.

Users can create unlimited amounts of landmarks. These landmarks can be either rectangles, ovals, or polygons.

Vehicles:	DC Circulator 101 DC Circulator 102 DC Circulator 104 DC Circulator 1101 DC Circulator 1102				
Exception Type:	Zone Pennsylvania and 28th Ritz Carlton				
Date From:	2009-4-1 06:00 AM				
Date To:	2009-4-1 08:00 AM				
<input type="button" value="Generate Report"/>					
Exception Name	Exception Type	Total Duration	Exception Landmark		
Zone Exception DC	Zone	00:20:14	Pennsylvania and 28th Ritz Carlton		
Vehicle name	Enters Landmark	Exits Landmark	Duration	Direction	Speed
DC Circulator 1106	4/1/2009 6:50:59 AM	1/4/2009 06:53:51 AM	00:02:52	North	0 0
DC Circulator 1115	4/1/2009 7:15:52 AM	1/4/2009 07:17:31 AM	00:01:39	North	0 0
DC Circulator 1116	4/1/2009 7:17:32 AM	1/4/2009 07:19:36 AM	00:02:04	North	0 0
DC Circulator 1103	4/1/2009 7:19:09 AM	1/4/2009 07:21:57 AM	00:02:48	North	0 0
DC Circulator 1129	4/1/2009 7:37:36 AM	1/4/2009 07:39:51 AM	00:02:15	North	0 0
DC Circulator 1107	4/1/2009 7:43:46 AM	1/4/2009 07:45:52 AM	00:02:06	North	0 0

ZONE EXCEPTION REPORTS

Zone Exception Reports

The Zone Exception Reports will notify staff when vehicles enter or leave specified landmarked locations or boundaries.

These landmarks are created using the Landmarks Tool. Users can also request for Zone Exceptions based on Operating Areas, i.e. County/City Lines.

All exceptions can be sent automatically to management via e-mail.



You Face Unprecedented Fleet Management Challenges

Solve Them in Record Time with AFI Tracking Solutions,
The First Web-Based Real-Time GPS/AVL
Solution in North America

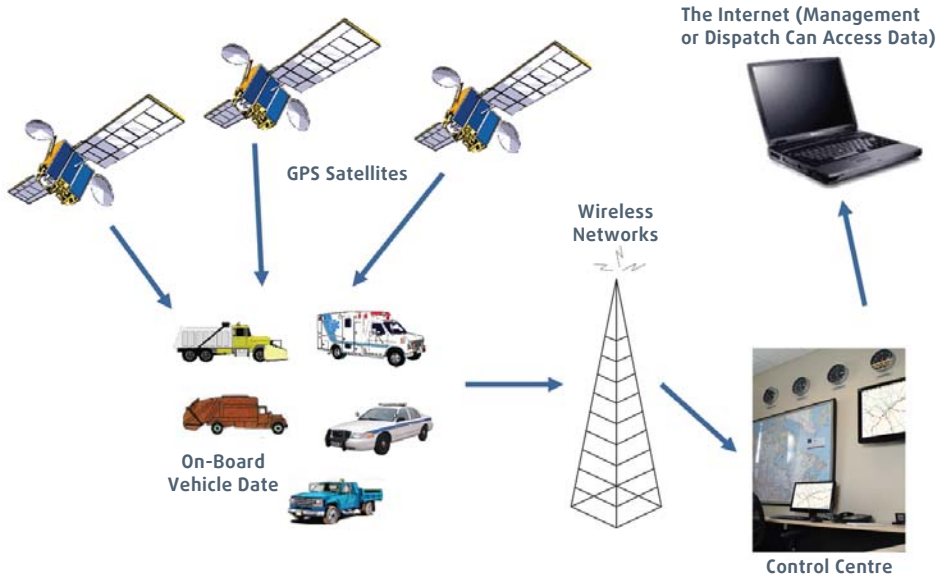


Corporate Headquarters

AFI International Group Inc.
8160 Parkhill Drive
Milton, Ontario
L9T 5V7

Telephone: 905-693-0746
Toll Free: 1-800-313-9170
Fax: 905-693-1213
Toll Free Fax: 1-800-304-3998

www.afi-international.com



Real-time information you can rely on to
deliver peak performance for your fleet

Proudly Established in Canada and the U.S.

